



Quiz: Who? Whom?

Which is correct, *who* or *whom*? Take our [quick quiz](#) on the subject pronoun *who* and the object pronoun *whom*, and you'll learn a few tricks so you can finally give a w-hoot!



A Reconfiguration Situation

Relying on *former* and *latter* can frustrate readers. For a more elegant solution, says



Why Are You Hedging?

An MLA editor offers tips to avoid overusing qualifiers like “it seems to me” and “I

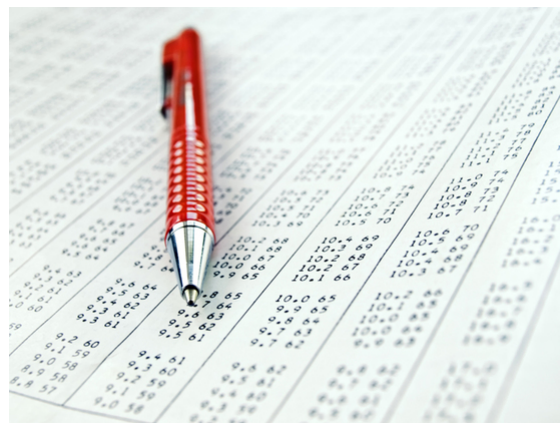
an MLA editor, try looking at your sentence as an unsolved puzzle. [Find out more.](#)

believe,” which can weaken your prose and lead to redundancy. [Find out more.](#)



Dates of Access

Do you have to cite the date you accessed an online work? The MLA editors explain the recommendations in the eighth edition of the *MLA Handbook*. [Find out more.](#)



Citing Data Tables

Crunching the numbers? If you need to know how to create a parenthetical citation or a works-cited-list entry for a data table, our editors are here to help! [Find out more.](#)

Citing Informal Sources

Citing a brochure, a letter to the editor, or another informal, nonacademic source? We've got advice. [Find out more.](#)

Excluding *Include*

If you think your list is complete, what's the one thing you should not include? An MLA editor tells you the answer. [Find out more.](#)

How Happy Is Your New Year?

To help you ring in 2017, an MLA editor tells you how to properly style your New Year's greeting. [Find out more.](#)

See You at CCCC in Portland!

At the CCCC meeting (15–18 March) we'll give out free copies of the [MLA Handbook](#) and hold a session on MLA style!





Modern Language Association, 85 Broad Street, suite 500, New York, NY 10004-2434

Share this email:



[Manage](#) your preferences | [Opt out](#) using TrueRemove™

Got this as a forward? [Sign up](#) to receive our future emails.

View this email [online](#).

85 Broad St suite 500
New York, NY | 10004-2434 US

To continue receiving our emails, add us to your address book.